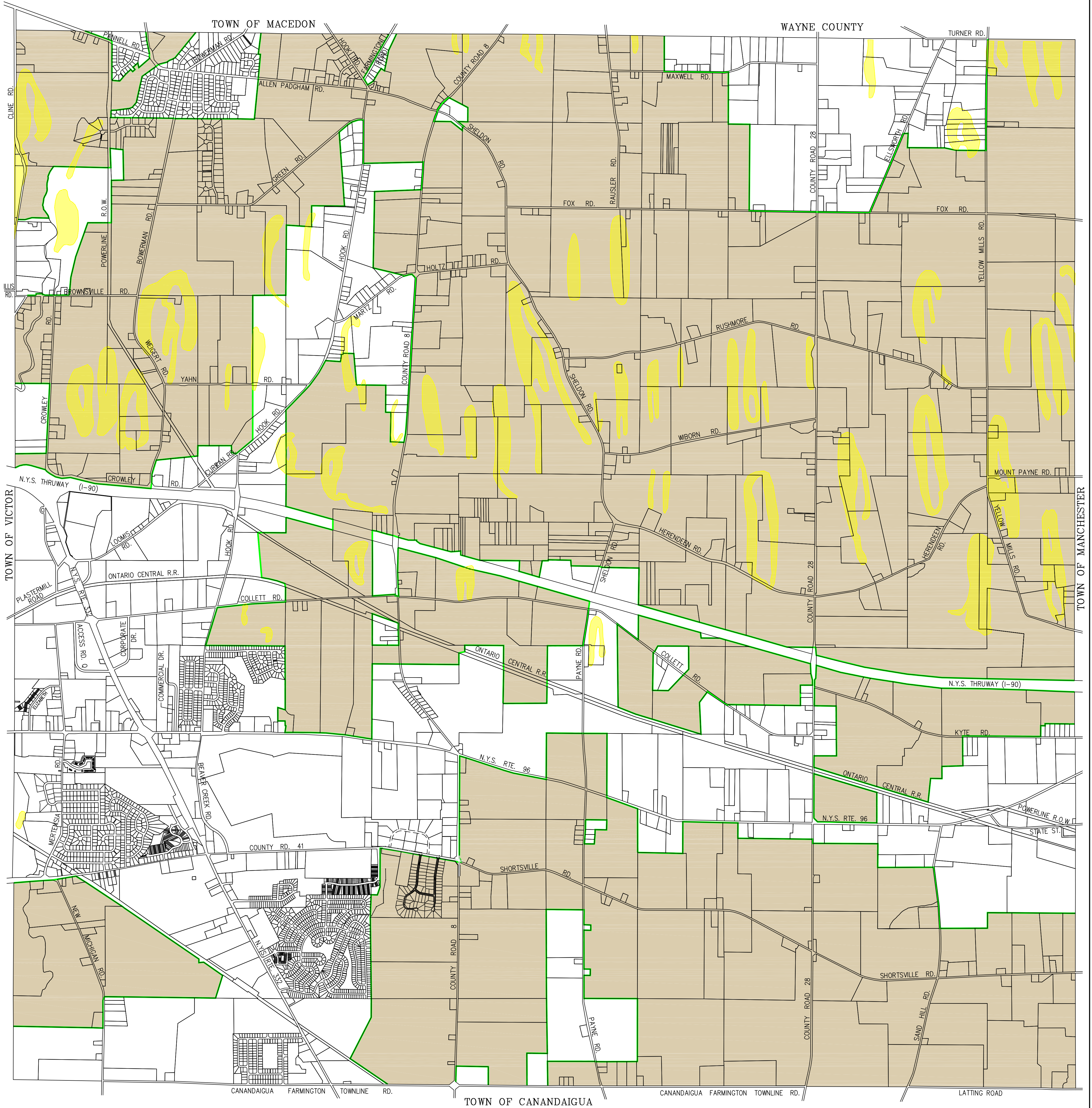
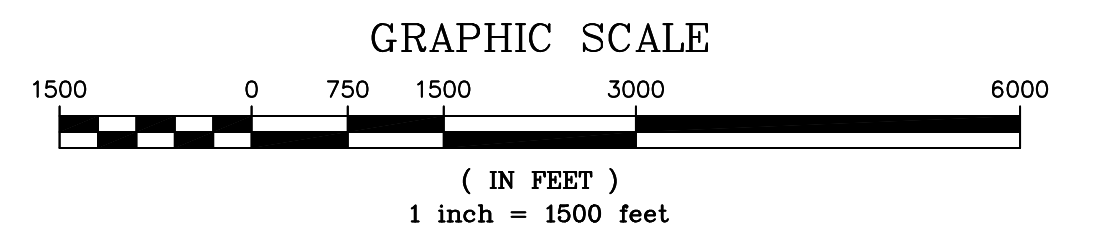
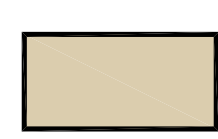



TOWN OF FARMINGTON COMPREHENSIVE PLAN



SOURCE OF DIGITAL DATA:
YEAR 2002, ONTARIO COUNTY PLANNING DEPARTMENT,
20 ONTARIO STREET, CANANDAIGUA, NEW YORK 14424

LEGEND

-  CONSOLIDATED AGRICULTURAL DISTRICT NO. 1
-  INDICATES AREAS OF STEEP SLOPES

MAP NO. 9

ONTARIO COUNTY
CONSOLIDATED AGRICULTURAL DISTRICT NO. 1
AND AREAS OF STEEP SLOPES

LU ENGINEERS
Civil and Environmental

JOSEPH C. LU ENGINEERING AND LAND SURVEYING, P.C.
2230 PENFIELD ROAD
PENFIELD, NEW YORK 14526
PHONE: 585.377.1450 FAX: 585.377.1266

RLB
PLANNING GROUP

DECEMBER 2003