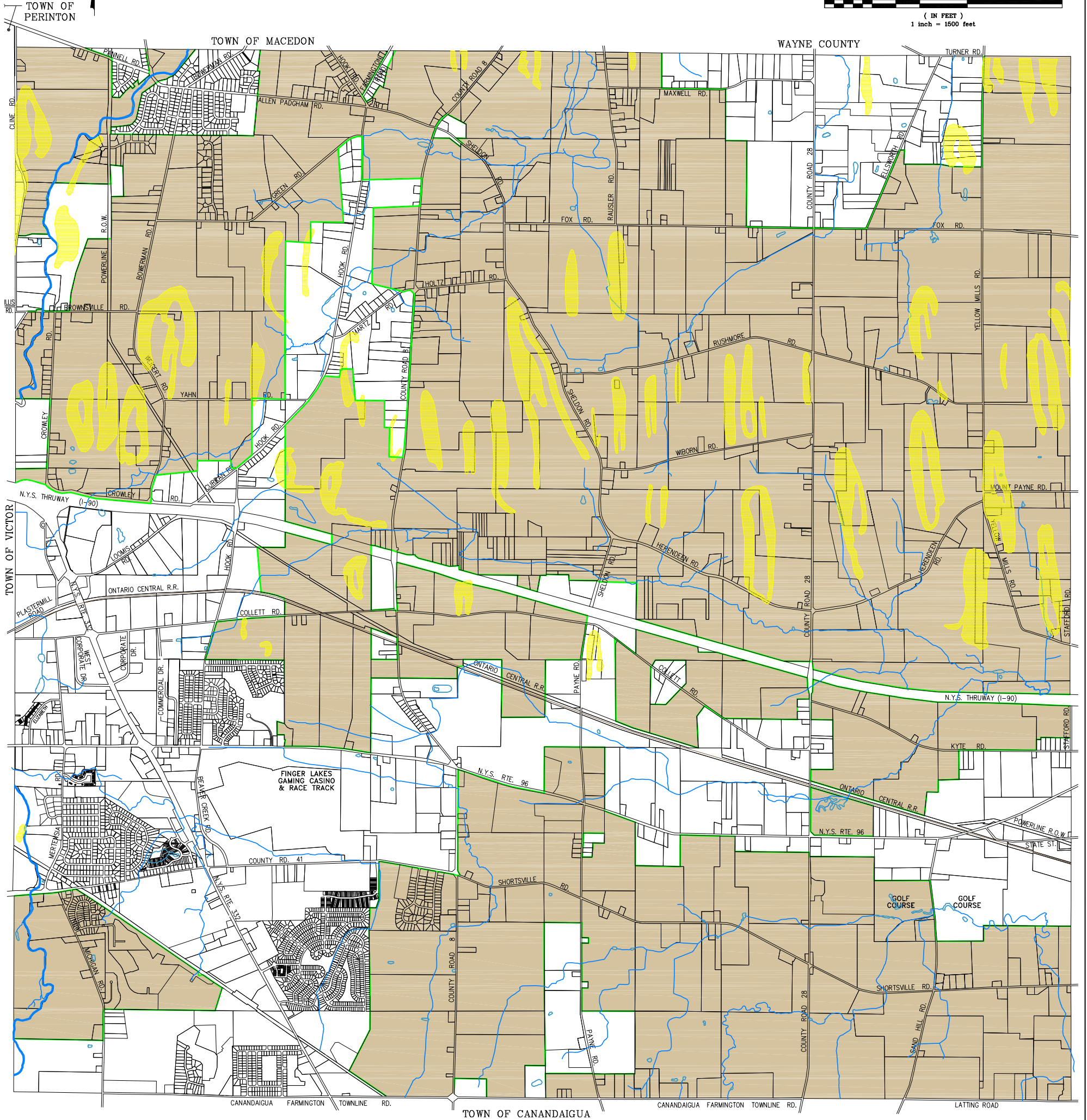
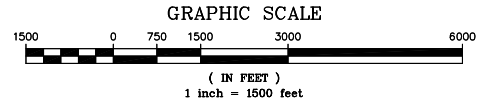




# TOWN OF FARMINGTON COMPREHENSIVE PLAN



NOTE: THE BOUNDARIES OF THE COUNTY AGRICULTURE DISTRICT NO. 1 ARE SUBJECT TO CHANGE EACH YEAR WITH LAND BEING ADDED. LAND MAY ONLY BE REMOVED DURING THE EIGHT-YEAR ANNIVERSARY OF THE DISTRICT. THE NEXT EIGHTH YEAR ANNIVERSARY FOR AGRICULTURE DISTRICT NO. 1 IS NOVEMBER 2012. FOR THE LATEST BOUNDARY INFORMATION PLEASE CONTACT THE ONTARIO COUNTY PLANNING DEPARTMENT'S WEBSITE.

SOURCE OF DIGITAL DATA:  
YEAR 2002, ONTARIO COUNTY PLANNING DEPARTMENT,  
20 ONTARIO STREET, CANANDAIGUA, NEW YORK 14424

### LEGEND

-  CONSOLIDATED AGRICULTURAL DISTRICT NO. 1
-  INDICATES AREAS OF STEEP SLOPES

## MAP NO. 9

ONTARIO COUNTY  
CONSOLIDATED AGRICULTURAL DISTRICT NO. 1  
AND AREAS OF STEEP SLOPES

**Lu**  
Engineers  
ENVIRONMENTAL • TRANSPORTATION • CIVIL  
175 Sullys Trail, Suite 202  
Pittsford, New York 14534  
Ph: 585.385.7417 | Fax: 585.385.3741  
luengineers.com

**RLB**  
PLANNING GROUP

JULY 2011

A:\3193-03\Map\_09.dwg